

-  Option A
-  Air Quality Management Area (AQMA)
-  Sites of Special Scientific Interest (SSSI)
-  Flood Plain

0 0.3 0.6 0.9 1.2
Kilometers

This map is based upon Ordnance Survey material with the permission of Ordnance Survey on behalf of the Controller of Her Majesty's Stationery Office © Crown Copyright. Unauthorised reproduction infringes Crown Copyright and may lead to prosecution or civil proceedings. Department for Transport (PGA) SCHED05200815 2009.

**Department for
Transport**

**PB PARSONS
BRINCKERHOFF**
100 YEARS

• PROJECT
**DARTFORD RIVER CROSSING
STUDY INTO CAPACITY
REQUIREMENT**

• TITLE
**OPTION A
ADDITIONAL CAPACITY
AT THE EXISTING
DARTFORD CROSSING**

• DATE
JANUARY 2009

• SCALE
1: 24,000 @ A4

• GEODATABASE
HTT91430C

PRODUCED BY
TS

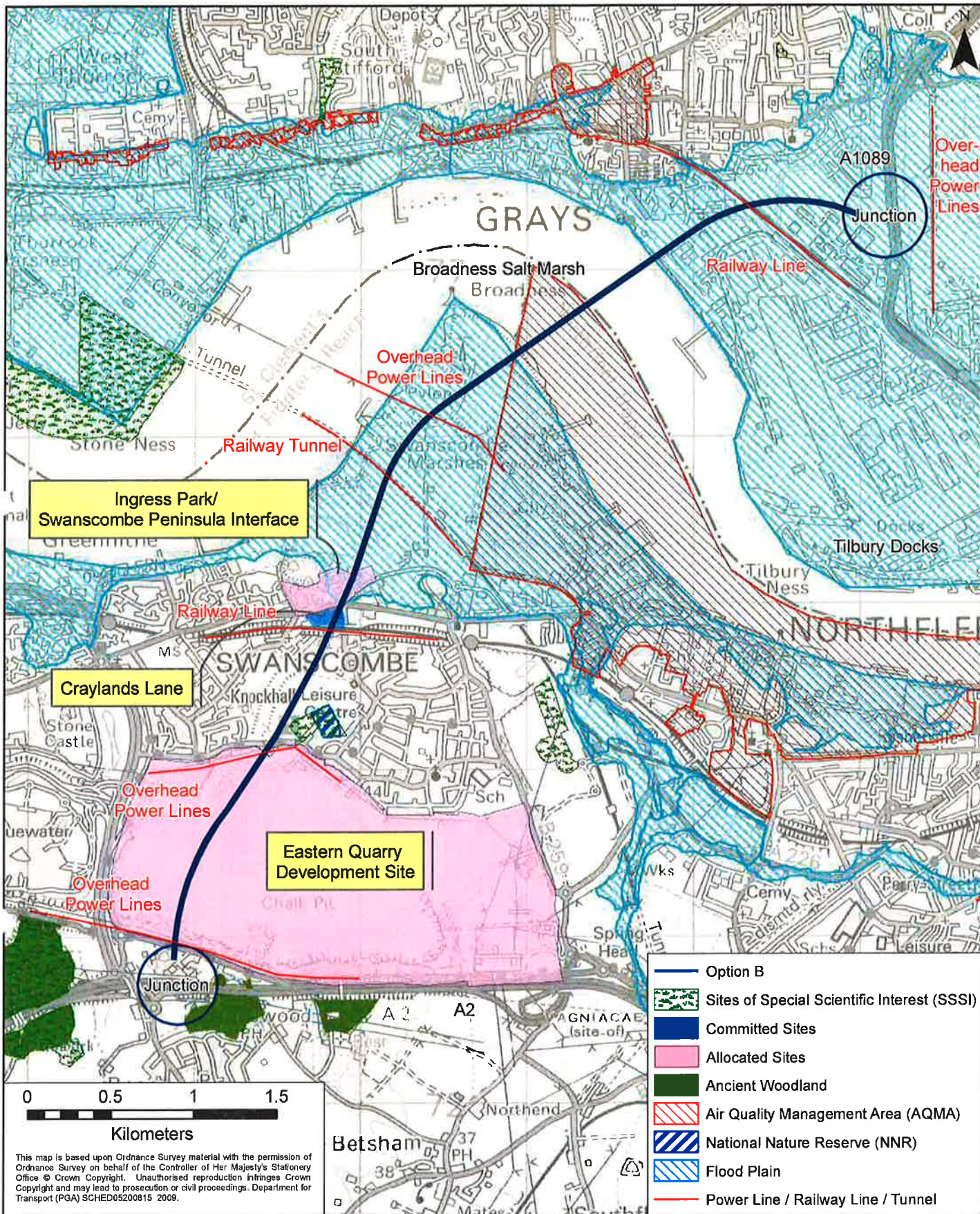
CHECKED
JC

APPROVED
KH

• FILE REF
FIGURE 10A-2

A

© Copyright Parsons Brinckerhoff



- Option B
- Sites of Special Scientific Interest (SSSI)
- Committed Sites
- Allocated Sites
- Ancient Woodland
- Air Quality Management Area (AQMA)
- National Nature Reserve (NNR)
- Flood Plain
- Power Line / Railway Line / Tunnel

This map is based upon Ordnance Survey material with the permission of Ordnance Survey on behalf of the Controller of Her Majesty's Stationery Office © Crown Copyright. Unauthorised reproduction infringes Crown Copyright and may lead to prosecution or civil proceedings. Department for Transport (PGA) SCHED05200815 2009.

Department for Transport

PROJECT
DARTFORD RIVER CROSSING STUDY INTO CAPACITY REQUIREMENT

DATE JANUARY 2009
SCALE 1: 30,000 @ A4
GEODATABASE HTT91430C

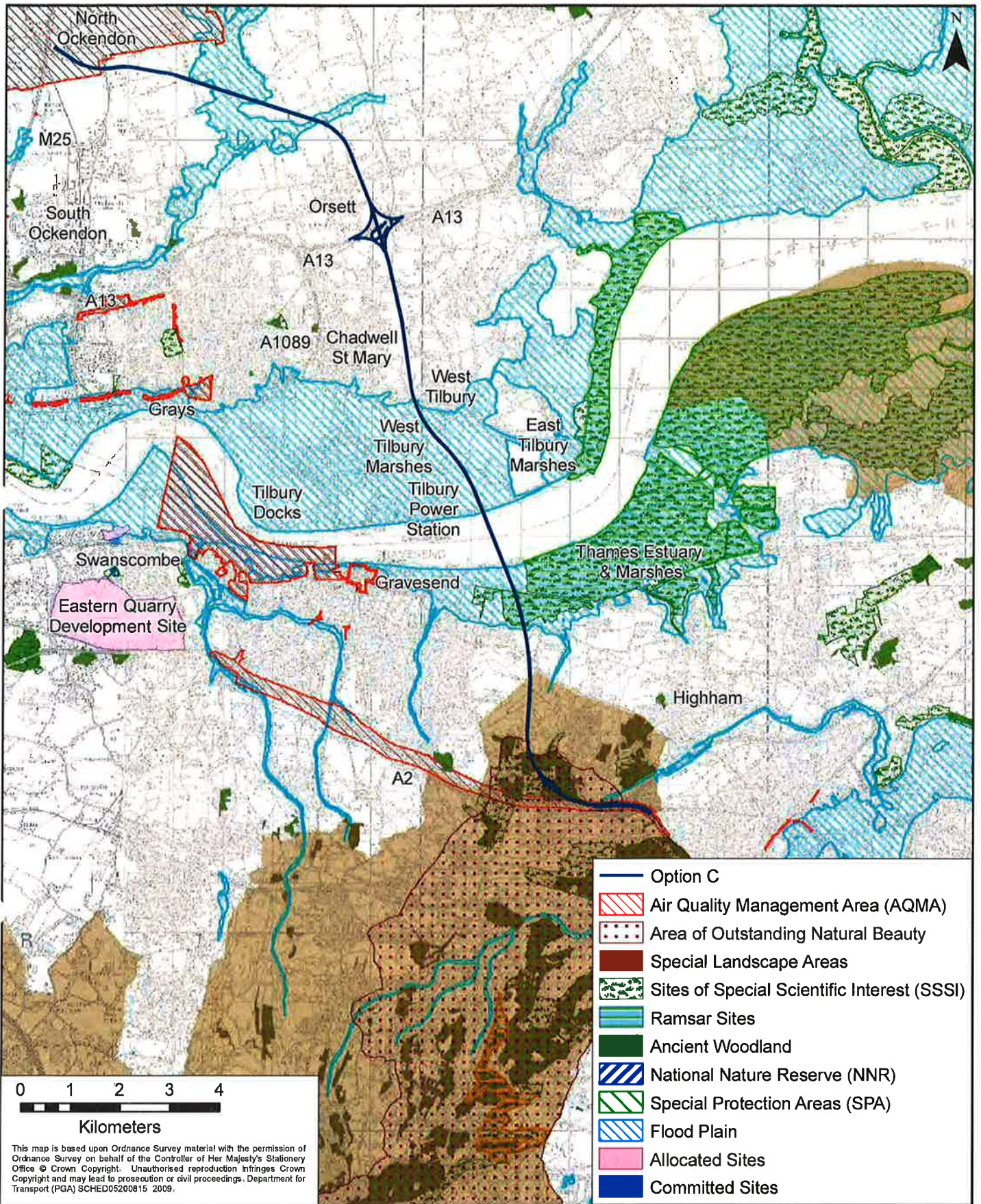
PRODUCED BY TS
CHECKED JC
APPROVED KH

PB PARSONS BRINCKERHOFF
 100 YEARS

TITLE
OPTION B SWANSCOMBE PENINSULA LINK TO THE A1089

FILE REF
FIGURE 10A-3 | A

© Copyright Parsons Brinckerhoff



- Option C
- Air Quality Management Area (AQMA)
- Area of Outstanding Natural Beauty
- Special Landscape Areas
- Sites of Special Scientific Interest (SSSI)
- Ramsar Sites
- Ancient Woodland
- National Nature Reserve (NNR)
- Special Protection Areas (SPA)
- Flood Plain
- Allocated Sites
- Committed Sites

This map is based upon Ordnance Survey material with the permission of Ordnance Survey on behalf of the Controller of Her Majesty's Stationery Office © Crown Copyright. Unauthorised reproduction infringes Crown Copyright and may lead to prosecution or civil proceedings. Department for Transport (PGA) SCHED05200815 2009.

**Department for
Transport**

**PB PARSONS
BRINCKERHOFF**
100 YEARS

• PROJECT
**DARTFORD RIVER CROSSING
STUDY INTO CAPACITY
REQUIREMENT**

• TITLE
**OPTION C
EAST OF GRAVESEND
AND LINK TO THE M20**

• DATE
JANUARY 2009

• SCALE
1: 100,000 @ A4

• GEODATABASE
HTT91430C

PRODUCED BY
TS

CHECKED
JC

APPROVED
KH

• FILE REF
FIGURE 10A-4 | **A**

© Copyright Parsons Brinckerhoff